

**Australia Xing One P/L**  
**Riverina- PCG Report September 2019**

## Project Team

<b>Developer</b>	<b>Australia Xing One Pty Ltd</b>
<b>Contractor</b>	<b>Australia Cenvic Construction</b>
<b>Architect</b>	<b>Peddle Thorp Architect</b>
<b>Structural Engineer</b>	<b>Bonacci Group</b>
<b>Services Engineer</b>	<b>SimpsonKotzman</b>
<b>Building Surveyor</b>	<b>BSGM</b>

## Monthly Project Progress

### Swimming Pool

- Swimming pool host structure on level 18 of Tower D in progress.

### Steel Structure Canopy

- The Steel Canopy at ground floor eastern and western walkway entrance have been installed.

### Window&Façade

- Sliding Door:  
The sliding door has been completed from level 6 to 16 on Tower E;  
The sliding door has been completed from level 6 to 16 on Tower C;  
The external frames have been installed from level 6 to 15 on Tower D; Door panels installation is ongoing and will be completed in one week;
- Curtain wall:  
Tower C curtain wall has been delivered on site from level 6 to 13 and it will be installed within next 2 weeks;  
Tower D curtain wall will be delivered on site by 30<sup>th</sup> September 2019;  
Tower E curtain wall has been completed from Level 7 to 13 except for the Alimak and Crane Area;
- Perforated screen:  
The steel frames and brackets have been installed 100% on Tower E level 14 to level 16;  
The steel frames and brackets have been installed 70% on Tower C level 14 to level 16;  
The perforated screen has been installed 60% (North and South) from level 14-level 16 on Tower E;
- Aluminium cladding:  
The aluminium cladding has been installed from level 6 to 13 on Tower E Western elevation; The aluminium cladding has been installed from level 6 to 13 on Tower D Eastern & Western elevation; The aluminium cladding has been installed from level 6 to 13 on Tower C Eastern elevation; The aluminium cladding has been installed 40% from level 6 to 13 on Tower E Northern elevation; The aluminium cladding will be installed from level 1-level 5 on Tower C southwest corner in one week.
- Balustrade and Louver:  
Balustrade has been installed on Level 14-16 on Tower E; Material for Level 7-13 is onsite, will be completed by the end of September.

### Services

- Plumbing: cold and hot water & gas pipes rough in work on Level 9~ 14 completed, Tower C. Level 7-13 is completed, and Level 14 is ongoing, Tower E.
- Mechanical: Install fans, ducts, refrigeration pipes on Level 9~13 Tower C. Level 10 to Level 15, Tower D; Completed from Level 7 to Level 16 of Tower E.
- Electrical: Rough In, Level 13 -14, Tower E. Level 11-14 Tower C. L10-12 Tower D.

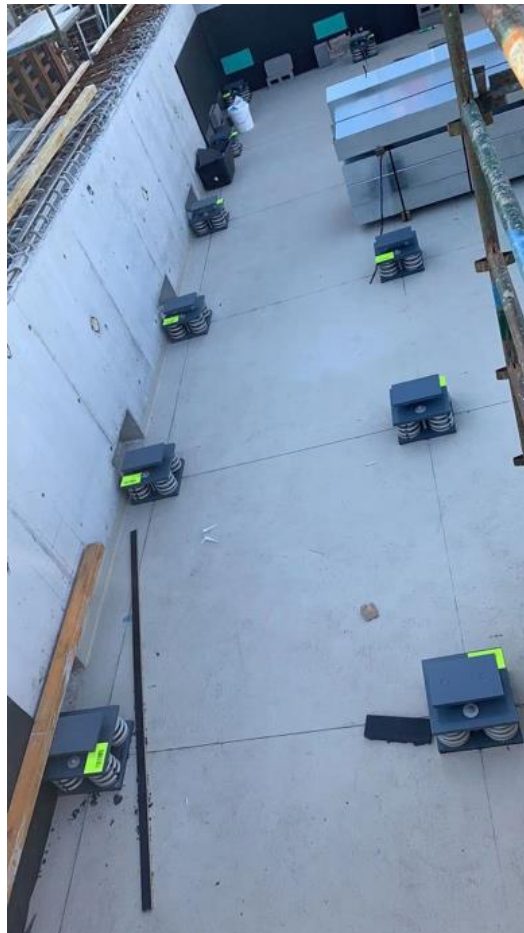
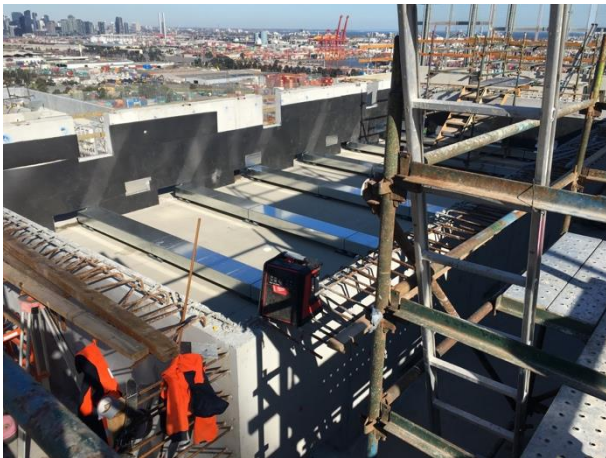
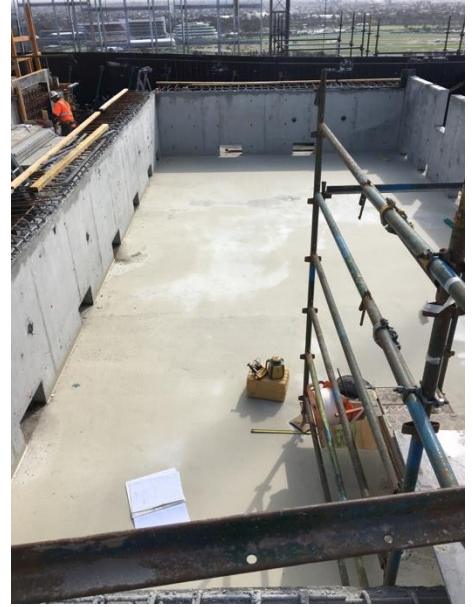
- Fire service: Install sprinkler heads Fit off on Level 7-13 on Tower E.
- Lift: On-going installation of Tower lift in Tower C&D, lift in Tower E is commissioning.
- Garbage Chute: Chute Section all complete in Tower C D E.

### Interior Fit-out

- Plastering:  
Tower E Level 6 to level 14 stud works completed, Level 15-16 in progress and level 6-13 P60 external wall completed; Level 6-10 internal plastering completed;  
Tower D level 6-15 stud works completed; fire check Level 6-Level 12 completed;  
Tower C fire check Level 6- Level 12 completed.
- Waterproofing:  
Waterproofing first coat of balcony from Level 7 to Level 16 Tower E;  
Screeding and waterproofing of bathrooms and laundries from Level 7 to Level 9 Tower E;  
Screeding and waterproofing of balcony and planter box on Level 6 Tower C;  
Screeding and waterproofing of Swimming pool areas on Level 18 Tower D.
- Painting:  
Internal apartment first coat will be completed from 7 to Level 13 of Tower E;  
External paint of Tower E is ongoing and will completed by the 30<sup>th</sup> of September, Alimak and Crane face excepted.  
Ceiling texture paint completed in the balcony area from Level 7 to Level 16 of Tower E;  
Ceiling texture paint completed in the balcony area from Level 7 to Level 16 of Tower C.
- Block work:  
Service riser block work completed from level 15 to level 16 of Tower C;  
Speed panels installed from Level 1 to Level 18 in the main core vent shaft of Tower D.
- Green façade: Plants of podium level car park is under pre growing.
- Tower level landscaping: Soil media and irrigation pipes will commence on Level 6 Tower D&E before end of September;
- Tiles: bathroom commenced on Level 6 Tower E;
- Kitchen: Level 6 &7 Cabinets materials delivered to site, ready for installation
- Internal door:  
All the cavity sliders has been installed from Level 6 to 16 on Tower E;  
The split jambs on level 7 to 8 has been installed on Tower E.

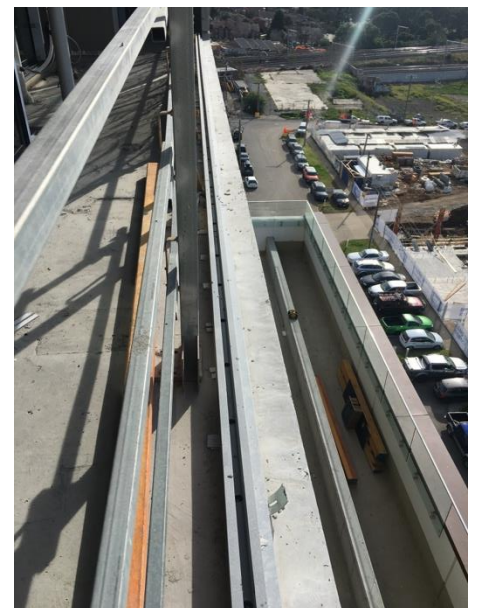
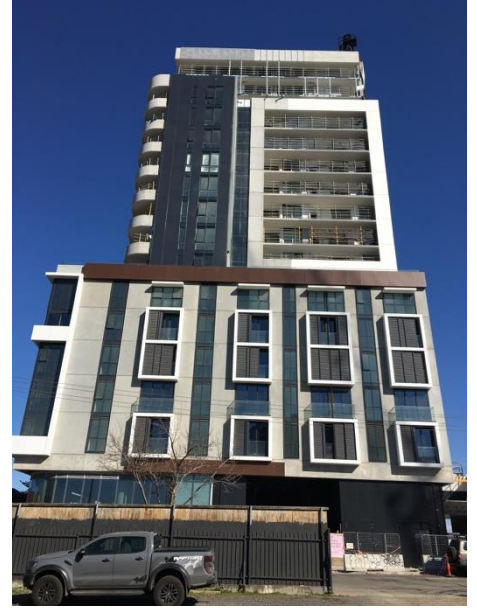
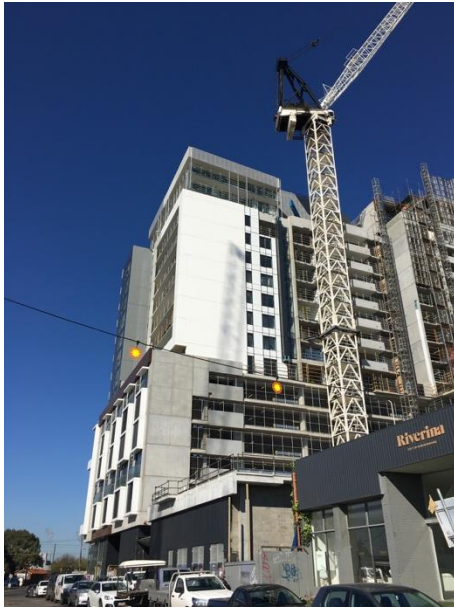
19 September 2019

**Photos:**  
Structural





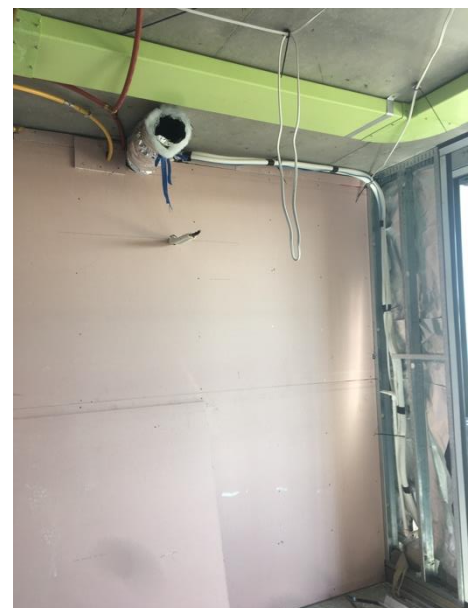
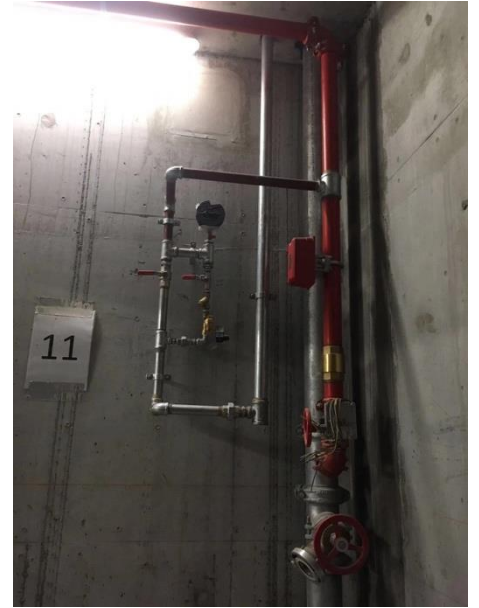
Façad





19 September 2019

Service





Interior Fit-out

