

Riverina- PCG Report July 2018

Project Team

Developer	Australia Xing One Pty Ltd
Contractor	Australia Cenvic Construction
Architect	Peddle Thorp Architect
Structural Engineer	Bonacci Group
Services Engineer	JBA Consultant
Building Surveyor	BSGM

Key Construction Process

Structure:

- Level 2 floor slab of tower A has been completed by two pours.
- Completed the kerb of podium level 2.
- Formwork stripping works completed in the basement and part of ground floor in Tower A.
- Material return and backload (Formwork material, Scaffold, Precast panel props etc).
- The wall of Pit 1 has completed half way and the slab of Pit 2 has completed.
- Apply galvanised paint to exposed steel bar in base level of Tower A, completed 60%.
- Tower C tower crane broken down for July pending repair.

Internal Trades:

- Service riser cup board installed in level 6-13 of Tower E.

Façade:

- Cladding box: Level 1-2 of Tower C,D,E : 6 pods installed , 75% completed. Level 3-4 of Tower C,D,E : 3 pods installed , 80% completed.
- Sliding door: 75% completed in Level 1 of Tower C,D,E.
- Louver& Balustrade: Level 1-2 of Tower C,D,E : 6 pods installed , 75% completed. Level 3-4 of Tower C,D,E : 3 pods installed , 80% completed.
- Corten cladding: Corten cladding brackets for Tower 5 have been installed.
- Perforated screen and Planter louver have been delivered on site.

Services:

- Plumber: Install stormwater and sewer pipe in Level 13,14,15 of Tower E , ground floor of Tower A.
- Mechanical: Install AC units in level 1 of Tower C, D,E, ducts in basement, electrical controller in plantroom.

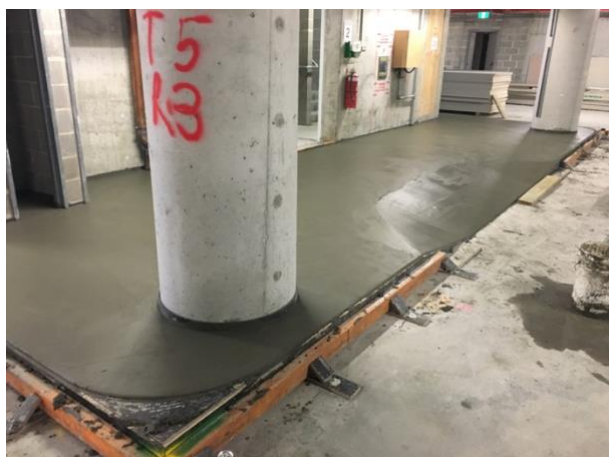
Consultants:

- The shop drawing of the Perforated screen and Planter louver has been approved by PTA.
- Shop drawing for Auto-door header support has been approved by PTA.
- Site inspection for level 2 slab conducted by Bonacci.

Authorities:

- No progress

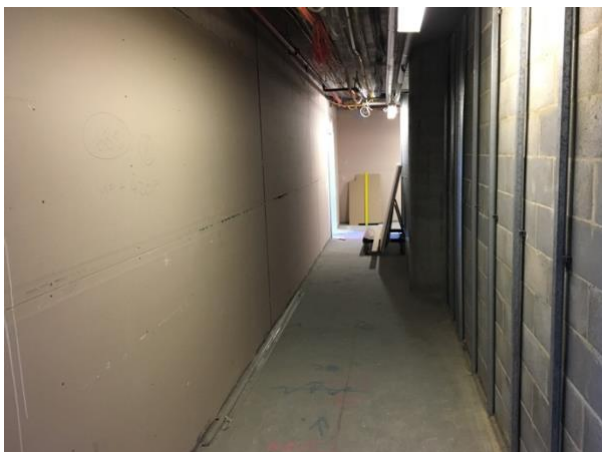
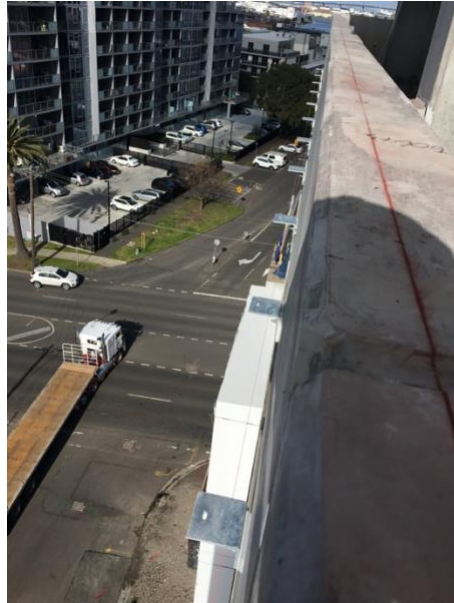
Photos:
Structural



Façade&Interior



Façade&Interior



Service

