

Australia Xing One P/L
Riverina- PCG Report November 2019

Project Team

Developer	Australia Xing One Pty Ltd
Contractor	Australia Cenvic Construction
Architect	Peddle Thorp Architect
Structural Engineer	Bonacci Group
Services Engineer	SimpsonKotzman
Building Surveyor	BSGM

Monthly Project Progress

Swimming Pool

- Swimming pool host structure on level 18 of Tower D has been 90% completed.
- Hydraulic works for the swimming pool installation ongoing
- Three stairs to the pool deck completed

Steel Structure Canopy

- The Steel Canopy at ground floor eastern and western walkway entrance have been installed.

Window

- Sliding Door:
The sliding door has been completed from level 6 to 16 on Tower E;
The sliding door has been completed from level 6 to 16 on Tower C;
The sliding door has been completed from level 6 to 15 on Tower D; Level 16-17 ongoing.
- Curtain wall:
Tower C curtain wall has been installed up to Level 13 in the west elevation; Northeast curtain wall completed.
Tower D curtain wall Level 6- 15 completed
Tower E curtain wall Level 6-15 completed;
- Punch Window:
Punch Windows on Tower C&E have been completed. Tower D has been complete up to Level 15 and Level 16&17 is ongoing.

Cladding

- Perforated screen:
Perforated screen has been installed 100% on Tower E level 14 to level 16;
The steel frames and brackets have been installed 100% on Tower C level 14 to level 16;
The brackets for the perforated screen has been started on Tower D;
- Aluminium cladding:
The aluminium cladding has been installed from level 6 to 13 on Tower E Western elevation;
The aluminium cladding has been installed 40% from level 6 to 13 on Tower E Northern elevation;
The aluminium cladding will be installed from level 1-level 5 on Tower C southwest corner in one week.
- Balustrade and Louver:
Balustrade has been installed on Level 7-16 on Tower E;
Balustrade has been installed on Level 14-16 on Tower C; Installation started from Level 7-13 is ongoing, will be completed by the end of November.

Balustrade has been installed on Level 7-11 on Tower D; Installation above Level 11 is ongoing.

Services

- Plumbing: Cold and hot water & gas pipes rough in work on Level 13-15 of Tower D is ongoing. Hardware fitout started on L6-9, Tower E.
- Mechanical: Install fans, ducts, refrigeration pipes on Level 13-16 Tower D; Fitout, A/C units' installation from Level 13-16 of Tower E & L6-9 on Tower C.
- Electrical: Rough in complete on Level 13 -16, Tower E& C. Level 13-15 on Tower D. Sockets Fit out commenced from Level 13-16, Tower E; L6-10, Tower C
- Fire service: Sprinkler heads Fit off is complete on Level 13-16 on Tower E, L6-12 Tower C, L6-8 Tower D.
- Lift: Installation of Tower lift in Tower C&D is ongoing, Tower E is on commission within one week.
- Garbage Chute: Chute Section all complete in Tower C, D&E, garbage door L6-12 Tower E.

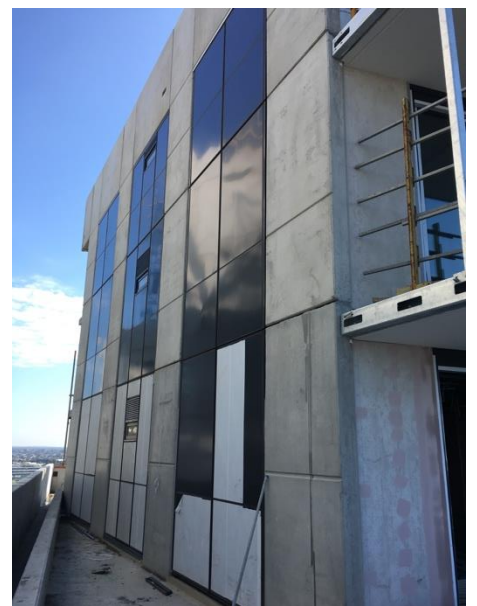
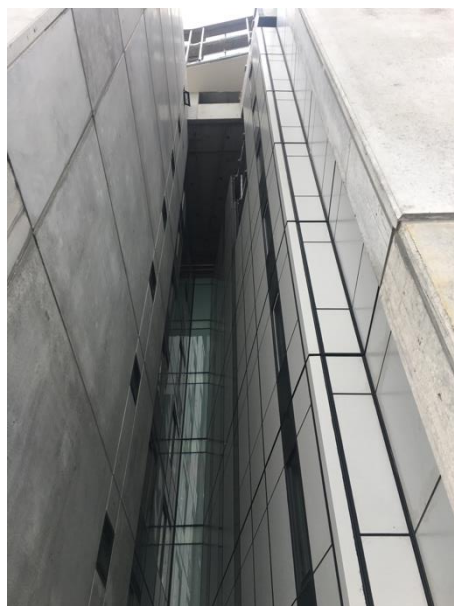
Interior Fit-out

- Plastering:
Internal:
Tower E stud and ceiling works is complete. Internal wall and ceiling plastering is complete;
Tower D stud works has been completed from Level 6-16. Ceiling works is completed from Level 6-13. Level 6-16 internal wall plastering is complete;
Tower C stud and ceiling works is complete from Level 6-16. Internal wall and ceiling plastering is complete from Level 6-13;
External:
P60 external wall is complete on Tower E.
P60 external wall is complete from Level 6-15 on Tower D.
P60 external wall is complete on Tower C.
- Waterproofing:
Waterproofing first coat of balcony from Level 7 to Level 16 Tower E;
Screeding and waterproofing of bathrooms and laundries from Level 6 to Level 13 Tower E;
Screeding and waterproofing of balcony and planter box on Level 14 Tower E is 50% complete;
Screeding and waterproofing of Swimming pool and Spa areas on Level 18 Tower D is complete.
- Painting:
Internal apartment paint is complete from Level 7-16 of Tower E;
External paint of Tower E is complete, Alimak and Crane face excepted.
External paint of Tower C is 80% complete, Alimak and Crane face excepted.
Ceiling texture paint completed in the balcony area from Level 7 to Level 16 of Tower E;
Ceiling texture paint completed in the balcony area from Level 7 to Level 12 of Tower D;
Ceiling texture paint completed in the balcony area from Level 7 to Level 16 of Tower C.

- Block work:
 - Bin chute block wall complete from Level 8 -16 of Tower C
 - Service riser block work completed from level 15 to level 16 of Tower C;
 - Block wall installed from Level 1 to Level 18 in the main core vent shaft of Tower D.
- Green façade: Plants of podium level car park is under pre growing.
- Tower level landscaping: Soil media has been delivered on site. Soil layers and irrigation pipes works will commence on Level 6 Tower D&E and Level 14 Tower E within 1 week;
- Tiles: bathroom tiling is complete on Level 7-9 Tower E;
- Kitchen& Wardrobe:
 - Kitchen:
 - Level 6 -13 of Tower E Cabinets installation has been completed. All the Cabinets materials on tower E has been delivered onsite.
 - Level 6-13 of Tower C&D Cabinets materials has been delivered onsite, ready for installation.
 - Wardrobe:
- Internal door:
 - All the cavity sliders have been installed from Level 6 to 16 on Tower E;
 - The split jambs on level 6 to 16 has been installed on Tower E.
 - The apartment entry door on tower E level 6 to 16 has been installed;
 - The skirting on tower E level 6 to 16 has been installed.
 - All the cavity sliders have been installed from Level 6 to 15 on Tower D;
 - The split jambs on level 7 has been installed on Tower D.
 - The skirting on tower D level 7 has been installed.
 - All the cavity sliders have been installed from Level 6 to 16 on Tower D;
 - The apartment entry door on tower C level 6 to 13 has been installed;
 - The skirting on tower E level 6 to 7 has been installed.

16 November 2019

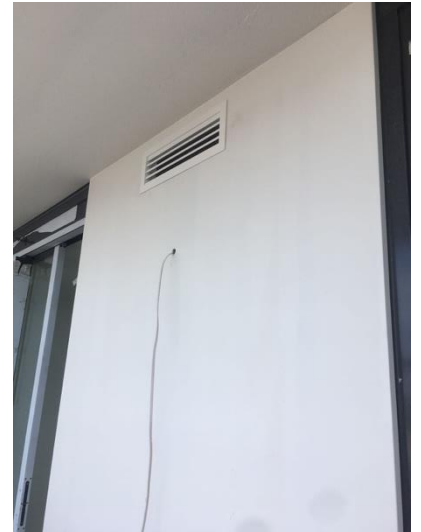
Photos:
Structural&Façade



18-24 Hopkins Street, Footscray VIC
Monthly report, November

16 November 2019

Service



Interior Fit-out

