

## **Riverina- PCG Report November 2018**

## Project Team

<b>Developer</b>	<b>Australia Xing One Pty Ltd</b>
<b>Contractor</b>	<b>Australia Cenvic Construction</b>
<b>Architect</b>	<b>Peddle Thorp Architect</b>
<b>Structural Engineer</b>	<b>Bonacci Group</b>
<b>Services Engineer</b>	<b>JBA Consultant</b>
<b>Building Surveyor</b>	<b>BSGM</b>

## Key Project issue

### Structure

- Concrete refill of Post tension pockets in Level 14 of Tower D.
- Concrete structure of stormwater detention pit built on ground floor has been completed.
- Concrete refill of Precast panel props penetration in Level 10,11,12,13 of Tower D.
- Concrete refill of Precast panel props penetration in Level 11,12,13 of Tower C.
- Concrete refill of Precast panel props penetration in Level 12,13 of Tower E.
- Concrete structure of kerb around main core from Level 1 to Level 5 of Tower C has been completed.
- Structural concrete patching caulking in level 1 of Tower A and main core of Tower E.
- Block wall of the ground floor loading zone of Tower E has been completed.

### Façade

- Window wall: Dismantle of all window walls in Level 5 of Tower C,D&E.
- Corten cladding: Installation in Level 1 has been completed in Tower C,D&E.
- Ebrew cladding: Installation of brackets has been completed in Tower C,D&E.
- Sliding door: external caulking of Level 1&2 has been completed in Tower C,D&E.
- Aluminium Pod : Internal caulking of Level 1&2 has been completed in Tower C,D&E.  
External caulking of Level 3&4 has been completed in Tower E.

### Services

- Plumber: Install stormwater and sewer pipe in Level 11 of Tower D, Hot water unit on roof level of tower C and E.
- Mechanical: Install AC units, pipes and ducts, and Electrical controller in level 4,5 of Tower C, D,E.
- Electrical: Cut cable fix in level 1 and shed light, switches, equipment installation.
- Fire service: Material delivered on site.
- Lift: Installation of tower lift in Tower C.

### Interior Fit-out

- Plaster: Level 1,2&3 apartment plaster wall completed.
- Kitchen: Level 1 Kitchen Cabinet Installed.
- Painting :Level 1 &2 first coating completed.

25 November 2018

**Photos:**  
Structural



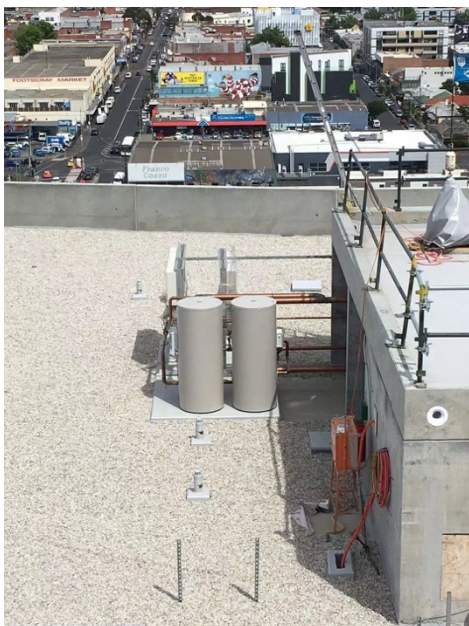
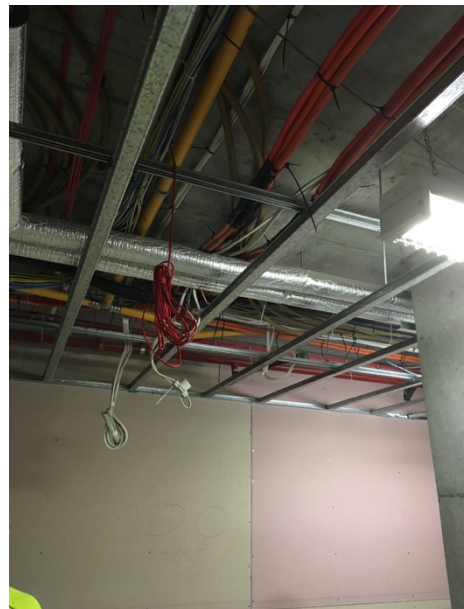


Façade





Service



25 November 2018

Interior Fit-out

