

# **Australia Xing One P/L**

## **Riverina- PCG Report**

**May 2020**

## Project Team

<b>Developer</b>	<b>Australia Xing One Pty Ltd</b>
<b>Contractor</b>	<b>Australia Cenvic Construction Pty Ltd</b>
<b>Architect</b>	<b>Peddle Thorp Architect</b>
<b>Structural Engineer</b>	<b>Bonacci Group</b>
<b>Services Engineer</b>	<b>SimpsonKotzman</b>
<b>Building Surveyor</b>	<b>BSGM</b>

## Monthly Project Progress

### External Works on Tower E

1. The curtain wall is 100% completion;
2. The sliding door is 100% completion;
3. The punch window is 100% completion;
4. The aluminium cladding is 100% completion;
5. The perforated screen is 100% completion;
6. The balustrade is 100% completion;
7. The sliding louvre is 100% completion;
8. The Privacy screen is 100% completion;
9. The external painting work is 100% completion; The Defect works for the external is ongoing;
10. Two steel structure has been installed on tower E level 6 north elevation during this month. We will do the steel fixing and pour the concrete next month;
11. The external cleaning works is on hold.
12. We pour the ramp on tower E ground floor from Grid M to R;
13. The auto-unit has been installed on ground floor lobby.
14. The mail-box on ground floor lobby has been installed.  
The lobby fit-out on ground floor is ongoing.
15. All the materials on level 2 to 3 have been cleared up. We finished the landmarking on level 5. The lower levels will be finished next month.
16. All the storage cages on carpark level have been installed.
17. We are installing the wheel stop, Corner guards, speed bump, bollard and guard rail on level 5 and we will finish the lower level next month.

18. The acoustic test has been done on tower E.
19. The stairwell pressure test has been done on tower E.

### **Internal works on Tower E**

1. The plaster work is 100% completion.
2. The internal painting is 95% completion which has three coats.  
The final coat of apartment entry door is ongoing.  
The defect work is ongoing.
3. The Service doors, apartment entry doors, internal doors are 100% completion, including the hardware;
4. The internal skirting is 100% completion. The aluminium skirting for corridor and lobby is 100% completion.
5. The waterproof is 100% completion, including the bathroom and balcony.
6. The Kitchen is 100% completion including cabinet, pines, bench top, splashback and appliance.
7. The bathroom is 100% completion, including mirror cabinet, shower screen, shower Head, splashback etc.
8. The tile is 100% completion.
9. The carpet or timber floor in the apartment is 100% completion.
10. The carpet tile in the corridor is 100% completion.
11. The lobby fit-out is 90% completion. Level 1 to 16 is nearly finished. The ground level is ongoing.
12. The fire caulking work is 100% completion.
13. The first cleaning working is 80% completion. We finished level 6 to 14 within this month.

14. The timber decking is 100% completion on level 6 and 14.
15. The landscaping is 80% completion on level 6 and 14.
16. The signage is 100% completion.

### **External Works on Tower C**

1. The curtain wall is 98% completion. 4 glasses on level 13 need to be replaced due to damage.
2. The sliding door is 100% completion;
3. The punch window is 100% completion;
4. The aluminium cladding is 95% completion; One horizontal cladding on north elevation is ongoing.
5. The perforated screen is 100% completion;
6. The balustrade is 90% completion; The balustrade on North elevation is ongoing.
7. The sliding louvre is 100% completion;
8. The Privacy screen is 100% completion;
9. The external painting work is 85% completion; The Defect works for the external is ongoing;
10. Two steel structure balcony on tower C level 6 is ongoing;
11. The external cleaning works is on hold.

### **Internal works on Tower C**

12. The plaster work is 90% completion. Two bedrooms in each level is on hold due to the north elevation cladding unfinished. The defect work is on hold.
13. The internal painting is 90% completion and the final coat is ongoing.

The defect work is ongoing.

14. The Service doors, apartment entry doors, internal doors are 100% completion, including the hardwares.
15. The internal skirting is 100% completion. The aluminium skirting for corridor and lobby is 100% completion.
16. The waterproof is 100% completion, including the bathroom and balcony.
17. The Kitchen is 100% completion including cabinet, pines, bench top, splashback and appliance.
18. The bathroom is 80% completion, including mirror cabinet, shower Head, splashback etc.  
The shower screen is 50% completion.
19. The tile is 100% completion.
20. The carpet or timber floor in the apartment is 50% completion.
21. The carpet tile in the lobby area is on hold.
22. The lobby fit-out is 60% completion. The two-pack panel is ongoing.
23. The fire caulking work is ongoing.
24. The first cleaning working is on hold.
25. The timber decking is 100% completion on level 6 and 14.
26. The landscaping is 60% completion on level 6 and 14.

## **External Works on Tower D**

1. The curtain wall is 90% completion. The infill flashing and caulking is ongoing. One piece of curtain wall on level 15 is on hold due to Alimak.
2. The sliding door is 100% completion;
2. The punch window is 100% completion;

3. The aluminium cladding is 100% completion;
4. The perforated screen is 100% completion;
5. The balustrade is 90% completion; The balustrade on North elevation is ongoing.
6. The Privacy screen is 100% completion;
7. The external painting work is 85% completion; The Defect works for the external is ongoing.
8. The external cleaning works is on hold.
9. Alimak hoist is dismantled from the building.
10. Precast Spandrel panel installed behind alimak Hoist

### **Internal works on Tower D**

11. The plaster work is 90% completion. level 17 is finished. Apartment 1 is ongoing due to the Alimak. The defect work is on hold.
12. The internal painting is 80% completion  
Level 17 is ongoing;  
The final coat for internal is ongoing;  
The defect work is ongoing.
13. The Service doors, apartment entry doors, internal doors are 100% completion, including the hardware;
14. The internal skirting is 90% completion.  
Level 16 and 17 is ongoing;  
The aluminium skirting for corridor and lobby is 90% completion.
15. The waterproof is 100% completion, including the bathroom and balcony.

16.The Kitchen is 90% completion including cabinet, pines, bench top, splashback and appliance.

Level 16 and 17 is ongoing;

17.The bathroom is 80% completion, including mirror cabinet, shower Head, splashback etc.

The installation of shower screen is ongoing.

Level 16 and 17 is ongoing;

18.The tile is 90% completion.

19.The carpet or timber floor in the apartment is on hold.

20.The carpet tile in the corridor is on hold.

21.The lobby fit-out is on hold.

22.The fire caulking work is on hold.

23.The first cleaning working is on hold.

24.The timber decking is 100% completion on level 6 and 15.

25.The landscaping is 50% completion.

## Services

1. Plumbing: Cold and hot water & gas hardware fit out , gas top, basin, toilets, shower, etc. Tower C& E: all complete, Tower D L6-9 complete.
2. Mechanical: Install fans, ducts, refrigeration pipes on Level 17-18 Tower D; Fitout, A/C units installation from L6-17. Tower C, A/C outdoor units installed on L7-16, Tower C. Tower E, all complete.
3. Electrical: Sockets, lights, oven, intercom, sensors,etc Fit out complete on Level L6-16, Tower E; L6-16, Tower C;L6-15, Tower D.
4. Fire service: Sprinkler heads Fit off is complete on L6- 18 Tower D. Tower C&E all complete. Carpark area L2-5 complete.



5. Lift: Installation of Tower lift complete in Tower C&D&E , all lifts in construction use.
6. Garbage Chute: Chute Section all complete in Tower C&D&E, basement equipment complete 90% on Tower C, D, E.

**Photos:**

**Carpark line markings**



**Tennary Walk Way**



## Mail Boxes



## Tower E Kitchen (Light Color)





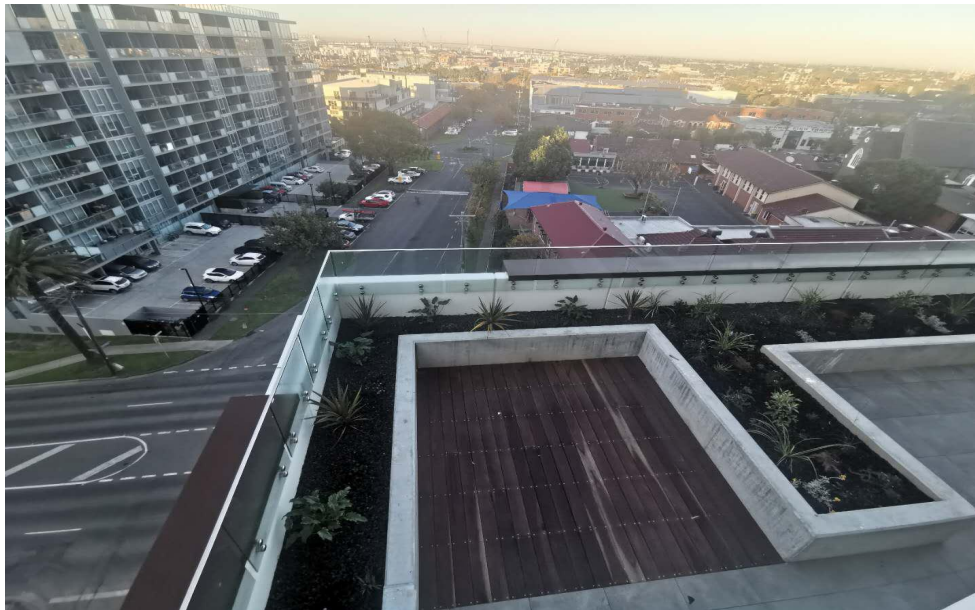
### **Tower E Kitchen (Dark Color)**



### **Tower E Bathroom**



## Level 6 Planter Box and Decking





### **Tower E Ground Floor Lobby**





## **Tower D Alimak Removed**



### **Tower E Shower Screen and Mirror Wardrobe Door**

