

Australia Xing One P/L
Riverina- PCG Report
March 2020

Project Team

Developer	Australia Xing One Pty Ltd
Contractor	Australia Cenvic Construction Pty Ltd
Architect	Peddle Thorp Architect
Structural Engineer	Bonacci Group
Services Engineer	SimpsonKotzman
Building Surveyor	BSGM

Monthly Project Progress

Swimming Pool

- Structure works on swimming pool and spa is completed
- Hydraulic works on swimming pool and spa is completed.
- Three stairs to the pool deck is completed.
- Water testing to the pool and spa is completed.
- Internal tanking of the pool and spa to start.

Concrete slab on Ground floor

- The additional concrete slab on Ground is completed.

Ground floor Lobby

- Fit-out works on Tower E/C/D lobby area ground floor ongoing

Window

- Sliding Door:
The sliding door has been completed from level 6 to 16 on Tower E;
The sliding door has been completed from level 6 to 16 on Tower C;
The sliding door has been completed from level 6 to 15 on Tower D;
The sliding door has been completed from Level 16-17 on Tower D;
- Curtain wall:
Tower C curtain wall is completed;
Tower D curtain wall is completed;
Tower E curtain wall is completed;
- Punch Window:
Punch Windows on Tower C&E have been completed.
Tower D has been complete up to 17.

Cladding

- **Perforated screen:**
Perforated screen has been installed 100% on Tower E level 14 to level 16;
Perforated screen has been installed 100% on Tower C level 14 to level 16;
Perforated screen has been installed 100% on Tower D level 16 to level 18;
- **Aluminium cladding:**
The aluminium cladding has been installed from level 6 to 13 on Tower E Western elevation;
The aluminium cladding has been completed from level 6 to 13 on Tower E Northern elevation.
- **Balustrade , privacy screen and Louver:**
Balustrade and Louver has been installed on Level 6-16 on Tower E;

Privacy screen has been installed 6-16 on Tower E;
Balustrade and louver have been installed on Level 6-16 on Tower C;
Balustrade has been installed on Level 7-15 on Tower D;

Services

- Plumbing: Cold and hot water & gas pipes rough in work on Level 17-18 of Tower D complete, Tower C Rough In complete. Tower E, L6-16, Hardware fitoff, gas top, basin, etc complete.
- Mechanical: Install fans, ducts, refrigeration pipes on Level 16-17 Tower D; Fitout, A/C units' installation on L6-12, Tower C, L6-L13 Tower D. A/C outdoor units installed on L6-13, Tower E.
- Electrical: Appliance, Sockets, lights, etc Fit out complete on Level L6-16, Tower E; L6-16, Tower C; L6-15, Tower D.
- Fire service: Sprinkler heads Fit off is complete on L16-17 Tower D, basement, ground floor Lobbies complete.
- Lift: Installation of Tower lift complete in Tower D , Tower C & E commissioning complete.
- Garbage Chute: Chute Section all complete in Tower C, D, E. basement equipment complete 80% on Tower C, D, E.

Interior Fit-out

- **Plastering:**

Internal:

The Alimak room and crane tie room on tower E is completed; The plaster works on tower E is fully completed;

The plaster work is finished up to Level 15 on tower D, including studs, internal wall, ceilings, partition walls; Level 16 and 17 is ongoing on tower D;

Tower C stud and ceiling works is complete from Level 6-16. Internal wall and ceiling plastering is complete from Level 6-15, except for the Alimak room

External:

P60 external wall is completed on Tower E.

P60 external wall is completed from Level 6-16 on Tower D.

P60 external wall is completed on Tower C.

- **Waterproofing:**

Waterproofing and screeding Tower E complete;

Waterproofing and screeding Tower D 6-15 complete;

Waterproofing and screeding Tower C complete;

- **Painting:**

Internal painting has been finished from Level 6-16 of Tower E;

Internal paint has been finished from level 6 to level 15 on Tower D;

Internal painting has been finished from level 6-16 on Tower C;

External paint of Tower E is completed on south, East and West elevation.

External paint of Tower C is completed on south, East and West elevation.

External paint of Tower D is complete on east and west elevation, south side ongoing
Ceiling texture paint completed in the balcony area from Level 7 to Level 16 of Tower E;
Ceiling texture paint completed in the balcony area from Level 7 to Level 15 of Tower D;
Ceiling texture paint completed in the balcony area from Level 7 to Level 16 of Tower C.

- **Block work:**
Block wall installation ongoing from Level 1 to Level 18 in the main core vent shaft of Tower D.
- **Green façade:** Soil slew to tower 5 level 6 Level 14 as well as Tower C level 6 plant box
- Tower level landscaping: Soil media has been delivered on site. Soil layers and irrigation pipes works on Level 6 Tower D&E and Level 14 Tower E is ongoing;
- Tiles: bathroom tiling is complete on Level 6-16 Tower E;
Bathroom and balcony tiling Level 6-11 complete Tower C; Level 12~16 ongoing
Bathroom and balcony tiling Level 6-9 complete Tower D; level~ 10 ~12 ongoing

- Kitchen, bathroom cabinets & Wardrobe:

Kitchen:

Kitchen Cabinets installation from Level 6 -16 on Tower E has been completed.

Kitchen Cabinets installation from Level 6 -15 on Tower D has been completed.

Kitchen Cabinets installation from Level 6 -16 on Tower C has been completed.

Bathroom Cabinet and shower screen:

The bathroom cabinet on tower E is completed;

The shower screen on tower E is finished 100%;

The shower screen on tower C is finished 50%;

- Wardrobe:

Wardrobe from Level 6-16 on Tower E has been installed;

Wardrobe from Level 6-16 on Tower C has been installed;

Wardrobe from Level 6-12 on Tower D has been installed;

- Appliances,

The appliance has been installed from level 6 to 16 on tower E, including Oven, dish washer, trough, rangehood and cooktop;

The appliance has been installed from level 6 to 10 on tower C, including Oven, dish washer, trough, rangehood and cooktop;;

- Carpentry and Joinery:

All the cavity sliders have been completed from Level 6 to 16 on Tower E;

All the cavity sliders have been installed from Level 6 to 15 on Tower D;

All the cavity sliders have been installed from Level 6 to 16 on Tower C;

- Split jambs:
The split jambs on level 6 to 16 has been completed on Tower E.
The split jambs on level 6 to 15 has been installed on Tower D.
The split jambs on level 6 to 16 has been installed on Tower C;
- Entry doors:
The apartment entry door on tower E level 6 to 16 has been completed;
The apartment entry door on tower D level 6 to 15 has been completed;
The apartment entry door on tower C level 6 to 16 has been completed;
Skirtings:
The skirting on tower E level 6 to 16 has been completed.
The skirting on tower D level 15 has been installed.
The skirting on tower E level 6 to 16 has been installed;
- Flooring:
Tower 5 level 6 - 16 apartment timber flooring completed
Tower 5 level 6 - 16 apartment carpet flooring completed, Level 14~level 16 ongoing
Tower 5 level 6 - 16 corridor carpet tile flooring ongoing

Elevation Photo

1. North Elevation for three towers



2. Tower E North Elevation



3. Tower D North Elevation



4. Tower C North Elevation



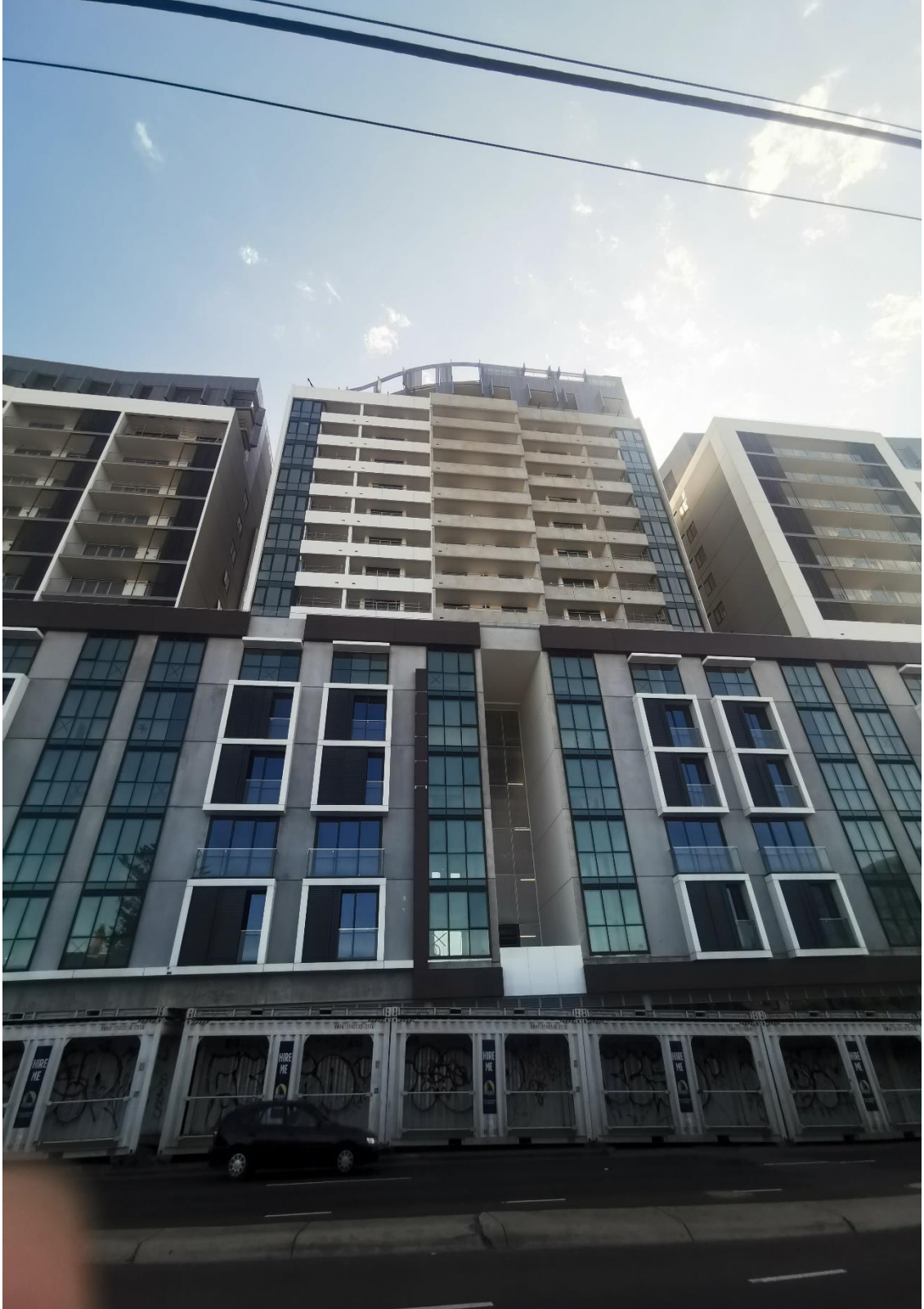
5. Tower C West Elevation



6. Tower C South Elevation



7. Tower D South Elevation



8. Tower E South Elevation



9. Tower E East Elevation



Internal works



28 March 2020





Balcony works









