

Riverina- PCG Report March 2019

Project Team

Developer	Australia Xing One Pty Ltd
Contractor	Australia Cenvic Construction
Architect	Peddle Thorp Architect
Structural Engineer	Bonacci Group
Services Engineer	JBA Consultant
Building Surveyor	BSGM

Monthly Project Progress

Structure

- Plant box and balcony hobs concrete structure on Level 6 of D was completed.
- The concrete slab of the alimak recess on Level 7 of Tower 5 was completed.
- Drainage pipe trench excavation and stabilised sand backfill at northside footpath on ground floor was completed.

Façade

- Curtain wall:
The installation of curtain wall on tower C and D southern elevation has been finished on;
The motor for the ground floor automatic sliding doors has been done as well;
The steel beam for podium lobby has been installed on tower C & E;
- The fold-up door on tower A ground floor has been installed;
- The perforated screen for the substation has been installed;
- The balustrade on level 6 has been finished;

Services

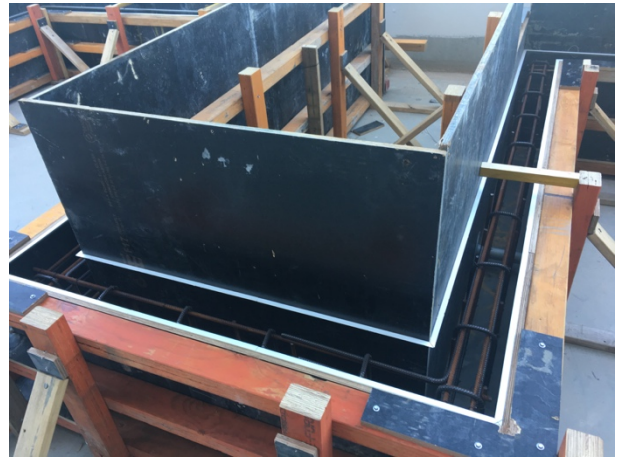
- Plumbing: Install stormwater and sewer pipes at Level 14&15 of Tower D; Install cold and hot water pipes & taps fit out at podium level 2,3&4, Hot water Unit on Tower D.
- Mechanical: Install ducts, fans on level 6 to 8 of Tower C, D&E, install exhaust & supply fans on Tower D roof.
- Electrical: Cut cable and fit out at podium level 2 to 5 and rough-in at podium level 4&5.
- Fire service: Install sprinkler pipes and heads at podium level 2 to 5.
- Lift: On-going Installation of tower lift in Tower C&D.

Interior Fit-out

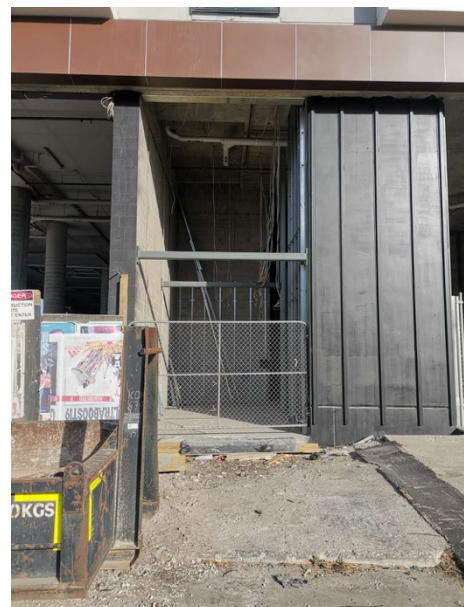
- Plastering: Level 1 to level 5 Corridor plastering and level 8 steel stud completed.
- Kitchen& Bath: Level 4 Kitchen under installation.
- Tiling: Level 4 Bathroom, Living room, Balcony Tiling completed.
- Duplex timber stairs: Level 4 to Level 5 10 stairs protection for temporary access.
- Waterproofing: Screeding and waterproofing of balcony and bathroom on Level 5 tower E.
- Carpentry: Level 5 apartment on Tower E skirting completed.
- Painting: The painting on Ground floor behind the perf has been done.
- Apartment internal door: Door installation completed on Level 5 Tower E.
- Floor Finish: Carpet installed on Level 1.

27 March 2019

Photos:
Structural



Façade



27 March 2019

Service



27 March 2019

Interior Fit-out

