

Riverina- PCG Report June 2019

Project Team

Developer	Australia Xing One Pty Ltd
Contractor	Australia Cenvic Construction
Architect	Peddle Thorp Architect
Structural Engineer	Bonacci Group
Services Engineer	JBA Consultant
Building Surveyor	BSGM

Monthly Project Progress

Structure

- Balcony hob build up from level 8 to level 16 of Tower 5.
- Balcony hob build up from level 13 to level 15 of Tower 4.
- Alimak of recess infill from level 8 to level 13 of Tower 5.
- Concrete pour of planer wall on level 6 of Tower 3.

Window&Façade

- Curtain wall: The cast-in has been installed from level 6 to 13 on Tower E;
- Sliding Door: The installation of sliding door has been finished from level 6 to 16 on Tower E, including External frame, internal frame, door panel and caulking;
- Window: The installation of window has been finished from level 6 to 16 on Tower E, including window and caulking;
- Balustrade: The bottom track of balustrade has been installed from level 6 to 14 on Tower E;
- Aluminium cladding:
The aluminium cladding has been installed from level 6 to 13 on Tower E Western elevation; The aluminium cladding has been installed from level 6 to 13 on Tower D Eastern & Western elevation; The aluminium cladding has been installed from level 6 to 13 on Tower C Eastern elevation;
- The perforated screen: It has been finished on Tower A & C car-park entrance;

Services

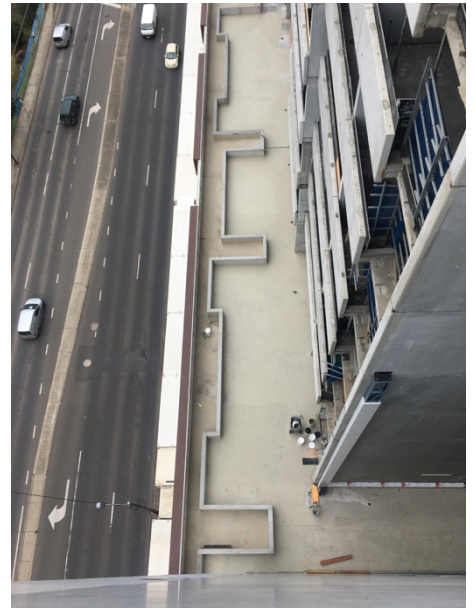
- Plumbing: Install stormwater and sewer pipes at Level 17 of Tower D; Install cold and hot water & gas pipes Rough In work on Level 6 ~ 8, Tower C D E.
- Mechanical: Install ducts, refrigeration pipes on level 6~8.
- Electrical: Cut cable and fit out on level 6~8, Tower C D E.
- Fire service: Install sprinkler pipes L10~16 on Tower E,
- Lift: On-going Installation of Tower lift in Tower C&D.

Interior Fit-out

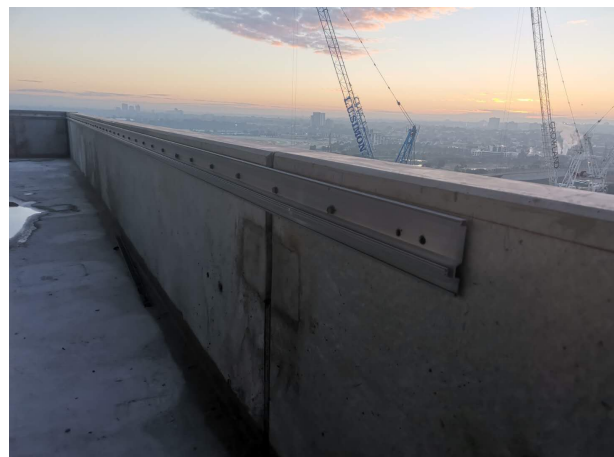
- Podium lobby fitout commence cladding panels of entry lobby was completed on Ground floor.
- Plastering: Level 6 to level 8 stud works completed and level 9 steel stud commenced
- Waterproofing: Screeding and waterproofing of Balcony and Planter box on Level 6 Tower 4 and 5.

29 June 2019

Photos:
Structural



Façade



Service



Interior Fit-out

