

Australia Xing One P/L
Riverina- PCG Report December 2019

Project Team

| | |
|----------------------------|--------------------------------------|
| Developer | Australia Xing One Pty Ltd |
| Contractor | Australia Cenvic Construction |
| Architect | Peddle Thorp Architect |
| Structural Engineer | Bonacci Group |
| Services Engineer | SimpsonKotzman |
| Building Surveyor | BSGM |

Monthly Project Progress

Tower Crane

- Tower crane of Tower E has been removed. Fitout works of rooms and balconies affected by tower crane is ongoing.

Swimming Pool

- Swimming pool host structure on level 18 of Tower D has been 100% completed.
- Hydraulic works for the swimming pool installation is complete.
- Three stairs to the pool deck is complete.
- Internal tanking to the pool is complete.

Steel Structure Canopy

- The Steel Canopy at ground floor eastern and western walkway entrance have been installed.

Window

- Sliding Door:
The sliding door has been completed from level 6 to 16 on Tower E;
The sliding door has been completed from level 6 to 16 on Tower C;
The sliding door has been completed from level 6 to 15 on Tower D; Level 16-17 ongoing.
- Curtain wall:
Tower C curtain wall has been installed up to Level 13 in the west elevation; Northeast curtain wall is complete.
Tower D curtain wall Level 6- 15 is complete.
Tower E curtain wall Level 6-15 is complete.
- Punch Window:
Punch Windows on Tower C&E have been completed. Tower D has been complete up to Level 15 and Level 16&17 is ongoing.

Cladding

- Perforated screen:
Perforated screen has been installed 100% on Tower E level 14 to level 16;
The steel frames and brackets have been installed 100% on Tower C level 14 to level 16;
Perforated screen started.
The brackets for the perforated screen has been started on Tower D, 30% completed;
- Aluminium cladding:
The aluminium cladding has been installed from level 6 to 13 on Tower E Western elevation;
The aluminium cladding has been installed 40% from level 6 to 13 on Tower E Northern elevation;
The aluminium cladding installation from level 1-level 5 on Tower C southwest corner is complete.

Balustrade and Louver:

Balustrade and Louver has been installed on Level 7-16 on Tower E;

Balustrade and louver has been installed on Level 14-16 on Tower C;

Balustrade has been installed on Level 7-12 on Tower D; Installation above Level 12 is ongoing.

Services

- Plumbing: Cold and hot water & gas pipes rough in work on Level 13-15 of Tower D complete, Tower C L13-16 Rough In complete. Hardware fitout , gas top, basin, started on L7-11, Tower E.
- Mechanical: Install fans, ducts, refrigeration pipes on Level 13-16 Tower D; Fitout, A/C units' installation from L6-12 on Tower C.
- Electrical: Sockets Fit out commenced from Level 13-16, Tower E; L6-13, Tower C; Tower D, L6-9.
- Fire service: Sprinkler heads Fit off is complete on L8- 15 Tower D.
- Lift: Installation of Tower lift in Tower C&D is ongoing, Tower E is complete.
- Garbage Chute: Chute Section all complete in Tower C, D&E, garbage door L6-12 Tower E, basement equipment starts on Tower C.

Interior Fit-out

- Plastering:
Internal:
Tower E is complete (Alimak room and crane tie room excepted);
Tower D stud works has been completed from Level 6-16. Ceiling works is completed from Level 6-15. Level 6-16 internal wall and ceiling plastering is complete;
Tower C stud and ceiling works is complete from Level 6-16. Internal wall and ceiling plastering is complete from Level 6-15;
External:
P60 external wall is complete on Tower E.
P60 external wall is complete from Level 6-16 on Tower D.
P60 external wall is complete on Tower C.
- Waterproofing:
Waterproofing first coat of balcony is completed from Level 7 to Level 16 Tower E;
Screeding and waterproofing of bathrooms and laundries from Level 6 to Level 13 Tower E is ongoing, and will be complete by 20th of December;
Screeding and waterproofing of balcony and planter box on Level 14 Tower E is 50% complete;
Screeding and waterproofing of Swimming pool and Spa areas on Level 18 Tower D is complete.
- Painting:
Internal painting has been finished from Level 6-16 of Tower E, except for the Alimak room and crane tie room;
Internal paint has been finished from level 6 to level 9 on Tower D;
Internal painting has been finished from level 6-12 on Tower C, except for the Alimak room and crane tie room;

External paint of Tower E is complete, Alimak and Crane face excepted.

External paint of Tower C is 80% complete, Alimak and Crane face excepted.

External paint of Tower D is complete on the east elevation.

Ceiling texture paint completed in the balcony area from Level 7 to Level 16 of Tower E;

Ceiling texture paint completed in the balcony area from Level 7 to Level 15 of Tower D;

Ceiling texture paint completed in the balcony area from Level 7 to Level 16 of Tower C.

- Block work:

Bin chute block wall is complete from Ground floor to Level 16 of both Tower C&E.

Main core staircase block wall is complete from Ground floor to Level 16 of both Tower C&E.

Block wall installed from Level 1 to Level 18 in the main core vent shaft of Tower D.

- Green façade: Plants of podium level car park is under pre growing.

- Tower level landscaping: Soil media has been delivered on site. Soil layers and irrigation pipes works on Level 6 Tower D&E and Level 14 Tower E is ongoing;

- Tiles: bathroom tiling is complete on Level 6-11 Tower E;

- Kitchen, bathroom cabinets & Wardrobe:

Kitchen:

Kitchen Cabinets installation from Level 6 -16 on Tower E has been completed.

Kitchen Cabinets installation from Level 6 -7 on Tower D has been completed.

Kitchen Cabinets installation from Level 6 -12 on Tower C has been completed.

Bathroom Cabinet and shower screen:

The bathroom cabinet and shower screen for three towers has been delivered on site and we are allocating the materials for each apartment.

Wardrobe:

Wardrobe Bottom track from Level 6-9 on Tower E has been installed;

Appliances, including Oven, dish washer, trough, rangedhood and cooktop:

The appliance has been installed from level 6 to 9 on tower E;

- Carpentry and Joinery:

Cavity sliders:

All the cavity sliders have been completed from Level 6 to 16 on Tower E;

All the cavity sliders have been installed from Level 6 to 15 on Tower D;

All the cavity sliders have been installed from Level 6 to 16 on Tower C;

Split jambs:

The split jambs on level 6 to 16 has been completed on Tower E.

The split jambs on level 10 has been installed on Tower D.

The split jambs on level 12 has been installed on Tower C;

Entry doors:

The apartment entry door on tower E level 6 to 16 has been completed;

The apartment entry door on tower D level 6 to 12 has been completed;

The apartment entry door on tower C level 6 to 13 has been completed;

Skirtings:

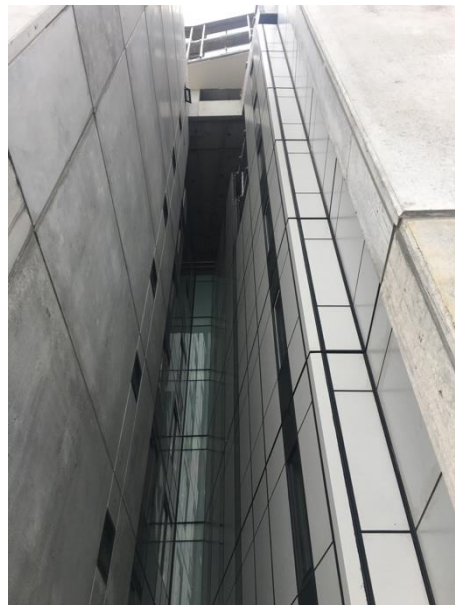
The skirting on tower E level 6 to 16 has been completed.

The skirting on tower D level 8 has been installed.

The skirting on tower E level 6 to 12 has been installed;

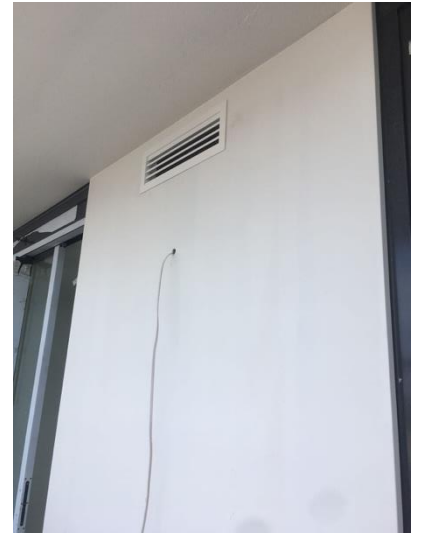
9 December 2019

Photos:
Structural&Façade



9 December 2019

Service



9 December 2019

Interior Fit-out

